


Form C: Type Test Verification Report

Type Approval and **Manufacturer** declaration of compliance with the requirements of G98.

This form should be used when making a Type Test submission to the Energy Networks Association (ENA).

If the **Micro-generator** is **Fully Type Tested** and already registered with the ENA **Type Test Verification Report** Register, the **Installation Document** should include the **Manufacturer's** Reference Number (the Product ID), and this form does not need to be submitted.

Where the **Micro-generator** is not registered with the ENA **Type Test Verification Report** Register this form needs to be completed and provided to the **DNO**, to confirm that the **Micro-generator** has been tested to satisfy the requirements of this EREC G98.

Manufacturer's reference number		MIN 3600TL-XH.	
Micro-generator technology		MIN 2500TL-XH, MIN 3000TL-XH, MIN 3600TL-XH.	
Manufacturer name		Shenzhen Growatt New Energy Co., Ltd.	
Address		4-13th Floor, Building A, Sino-German Europe Industrial Demonstration Park, No. 1, Hangcheng Avenue, Bao'an District, Shenzhen, Guangdong, China.	
Tel	+86 755 2951 5888	Fax	+86 755 2747 2131
E-mail	peng.zhu@growatt.com	Web site	www.ginverter.com
Registered Capacity , use separate sheet if more than one connection option.	Connection Option		
	2.5-3.6	kW single phase, single, split or three phase system	
	NA	kW three phase	
	NA	kW two phases in three phase system	
	NA	kW two phases split phase system	
Manufacturer Type Test declaration. - I certify that all products supplied by the company with the above Type Tested reference number will be manufactured and tested to ensure that they perform as stated in this document, prior to shipment to site and that no site modifications are required to ensure that the product meets all the requirements of EREC G98.			
Signed		On behalf of	Shenzhen Growatt New Energy Co., Ltd.
<p>Note that testing can be done by the Manufacturer of an individual component or by an external test house.</p> <p>Where parts of the testing are carried out by persons or organisations other than the Manufacturer then that person or organisation shall keep copies of all test records and results supplied to them to verify that the testing has been carried out by people with sufficient technical competency to carry out the tests.</p>			

1.Operating Range: This test should be carried out as specified in A.1.2.10.

Active Power shall be recorded every second. The tests will verify that the **Micro-generator** can operate within the required ranges for the specified period of time.

The **Interface Protection** shall be disabled during the tests.

In case of a PV **Micro-generator** the PV primary source may be replaced by a **DC** source.

In case of a full converter **Micro-generator** (eg wind) the primary source and the prime mover **Inverter/rectifier** may be replaced by a **DC** source.

In case of a DFIG **Micro-generator** the mechanical drive system may be replaced by a test bench motor.

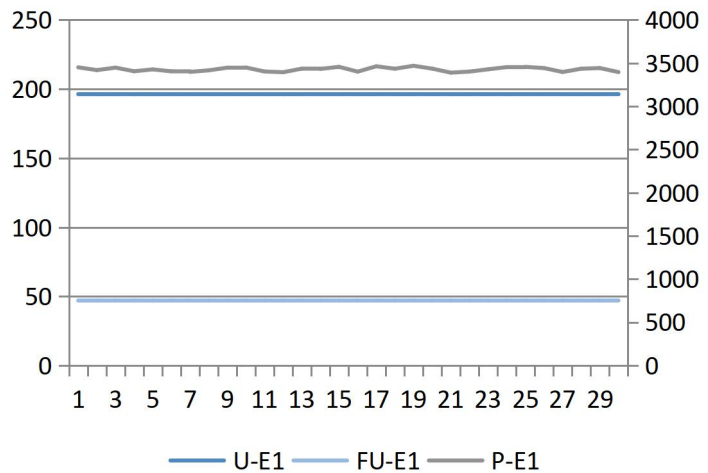
Test 1

Voltage = 85% of nominal (195.5 V),

Frequency = 47 Hz,

Power Factor = 1,

Period of test 20 s



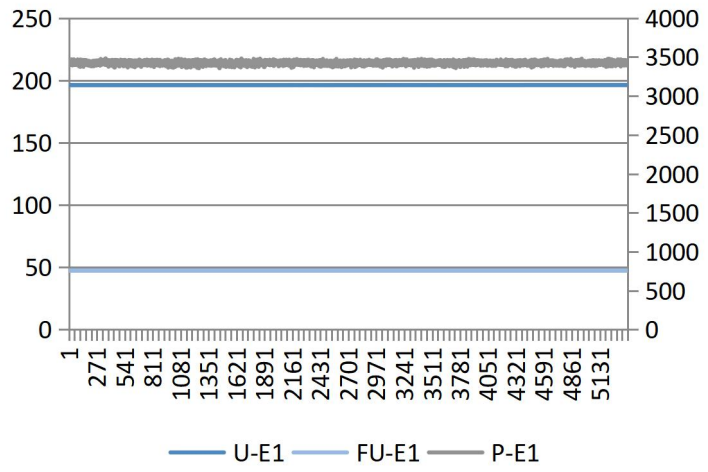
Test 2

Voltage = 85% of nominal (195.5 V)

Frequency = 47.5 Hz

Power factor = 1

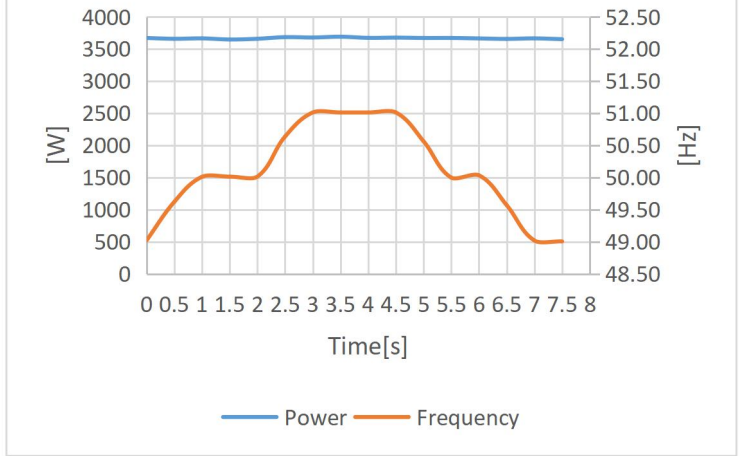
Period of test 90 minutes



<p>Test 3</p> <p>Voltage = 110% of nominal (253 V).</p> <p>Frequency = 51.5 Hz</p> <p>Power factor = 1</p> <p>Period of test 90 minutes</p>	<p>Line graph showing three data series over 5131 samples. The left Y-axis (0-300) represents U-E1 (blue line), and the right Y-axis (0-4000) represents P-E1 (orange line). FU-E1 (grey line) is constant at 50. U-E1 is constant at approximately 253. P-E1 is constant at approximately 3500.</p>
<p>Test 4</p> <p>Voltage = 110% of nominal (253 V).</p> <p>Frequency = 52.0 Hz</p> <p>Power factor = 1</p> <p>Period of test 15 minutes</p>	<p>Line graph showing three data series over 856 samples. The left Y-axis (0-300) represents U-E1 (blue line), and the right Y-axis (0-4000) represents P-E1 (orange line). FU-E1 (grey line) is constant at 50. U-E1 is constant at approximately 253. P-E1 is constant at approximately 3500.</p>
<p>Test 5</p> <p>Voltage = 100% of nominal (230 V),</p> <p>Frequency = 50.0 Hz,</p> <p>Power Factor = 1,</p> <p>Period of test = 90 minutes</p>	<p>Line graph showing three data series over 5131 samples. The left Y-axis (-10 to 240) represents U-E1 (blue line), and the right Y-axis (0-4000) represents P-E1 (grey line). FU-E1 (light blue line) is constant at 50. U-E1 is constant at approximately 230. P-E1 is constant at approximately 3500.</p>

Test 6 RoCoF withstand

Confirm that the Power Generating Module is capable of staying connected to the Distribution Network and operate at rates of change of frequency up to 1 Hzs-1 as measured over a period of 500 ms. Note that this is not expected to be demonstrated on site.



2.Power Quality – Harmonics: These tests should be carried out as specified in BS EN 61000-3-2. The chosen test should be undertaken with a fixed source of energy at two power levels a) between 45 and 55% and b) at 100% of Registered Capacity. The test requirements are specified in Annex A1 A.1.3.1 (Inverter connected) or Annex A2 A.2.3.1 (Synchronous).

Micro-generator tested to BS EN 61000-3-2

Micro-generator rating per phase (rpp)			3.6	kW		
Harmonic	At 45-55% of Registered Capacity		100% of Registered Capacity			
	Measured Value MV in Amps	Normalised Value (NV) in Amps	Measured Value MV in Amps	Normalised Value (NV) in Amps	Limit in BS EN 61000-3-2 in Amps	Higher limit for odd harmonics 21 and above
2	0.023	0.026	0.031	0.034	1.080	
3	0.089	0.099	0.074	0.081	2.300	
4	0.011	0.012	0.014	0.016	0.430	
5	0.038	0.042	0.053	0.058	1.140	
6	0.007	0.008	0.008	0.009	0.300	
7	0.040	0.044	0.049	0.054	0.770	
8	0.008	0.008	0.008	0.009	0.230	
9	0.033	0.037	0.039	0.043	0.400	
10	0.006	0.006	0.006	0.007	0.184	

11	0.024	0.027	0.026	0.029	0.330	
12	0.004	0.005	0.007	0.008	0.153	
13	0.019	0.021	0.021	0.023	0.210	
14	0.004	0.005	0.004	0.004	0.131	
15	0.011	0.012	0.014	0.015	0.150	
16	0.002	0.003	0.004	0.004	0.115	
17	0.008	0.009	0.011	0.013	0.132	
18	0.002	0.002	0.004	0.004	0.102	
19	0.006	0.007	0.009	0.010	0.118	
20	0.002	0.002	0.002	0.003	0.092	
21	0.005	0.006	0.006	0.007	0.107	0.160
22	0.001	0.002	0.002	0.002	0.084	
23	0.004	0.004	0.005	0.005	0.098	0.147
24	0.001	0.001	0.002	0.002	0.077	
25	0.003	0.003	0.005	0.005	0.090	0.135
26	0.001	0.001	0.001	0.002	0.071	
27	0.002	0.003	0.003	0.004	0.083	0.124
28	0.001	0.001	0.002	0.002	0.066	
29	0.002	0.002	0.003	0.003	0.078	0.117
30	0.001	0.001	0.002	0.002	0.061	
31	0.002	0.002	0.003	0.003	0.073	0.109
32	0.001	0.001	0.001	0.002	0.058	
33	0.001	0.002	0.002	0.003	0.068	0.102
34	0.001	0.001	0.001	0.001	0.054	
35	0.001	0.001	0.002	0.002	0.064	0.096
36	0.001	0.001	0.001	0.001	0.051	
37	0.001	0.001	0.002	0.002	0.061	0.091

38	0.001	0.001	0.001	0.001	0.048	
39	0.001	0.001	0.002	0.002	0.058	0.087
40	0.001	0.001	0.001	0.001	0.046	

Note the higher limits for odd harmonics 21 and above are only allowable under certain conditions, if these higher limits are utilised please state the exemption used as detailed in part 6.2.3.4 of BS EN 61000-3-2 in the box below.

3.Power Quality – Voltage fluctuations and Flicker: These tests should be undertaken in accordance with EREC G98 Annex A1 A.1.3.3 (**Inverter** connected) or Annex A2 A.2.3.3 (Synchronous).

	Starting			Stopping			Running	
	d max	d c	d(t)	d max	d c	d(t)	P _{st}	P _{It} 2 hours
Measured Values at test impedance	0.56	0.45	0	0.58	0.46	0	0.20	0.19
Normalised to standard impedance	0.56	0.45	0	0.58	0.46	0	0.20	0.19
Normalised to required maximum impedance	-	-	-	-	-	-	-	-
Limits set under BS EN 61000-3-11	4%	3.3%	3.3%	4%	3.3%	3.3%	1.0	0.65
Test Impedance	R	0.4	Ω	X		0.25	Ω	
Standard Impedance	R	0.24* 0.4 [^]	Ω	X		0.15* 0.25 [^]	Ω	
Maximum Impedance	R	-	Ω	X		-	Ω	

Applies to three phase and split single phase **Micro-generators**.

[^] Applies to single phase **Micro-generators** and **Micro-generators** using two phases on a three phase

system. For voltage change and flicker measurements the following formula is to be used to convert the measured values to the normalised values where the power factor of the generation output is 0.98 or above. Normalised value = Measured value*reference source resistance/measured source resistance at test point. Single phase units reference source resistance is 0.4 Ω Two phase units in a three phase system reference source resistance is 0.4 Ω. Two phase units in a split phase system reference source resistance is 0.24 Ω. Three phase units reference source resistance is 0.24 Ω. Where the power factor of the output is under 0.98 then the X to R ratio of the test impedance should be close to that of the Standard Impedance. The stopping test should be a trip from full load operation. The duration of these tests need to conform to the particular requirements set out in the testing notes for the technology under test. Dates and location of the test need to be noted below.				
Test start date	19,Jun,2022	Test end date	19,Jun,2022	
Test location	Growatt Global Certification Lab			
4. Power quality – DC injection: This test should be carried out in accordance with A 1.3.4 as applicable. The % DC injection (“as % of rated AC current” below) is calculated as follows: % DC injection = Recorded DC value in Amps / base current where the base current is the Registered Capacity (W) / 230 V. The % DC injection should not be greater than 0.25%.				
Test power level(3.6k)	20%	50%	75%	100%
Recorded value in Amps	20.3mA	25.4mA	27.8mA	30.9mA
as % of rated AC current	0.13%	0.16%	0.18%	0.20%
Limit	0.25%	0.25%	0.25%	0.25%
Test power level(3k)	20%	50%	75%	100%
Recorded value in Amps	15.8mA	18.3 mA	21.9mA	25.4mA
as % of rated AC current	0.12%	0.14%	0.17%	0.19%
Limit	0.25%	0.25%	0.25%	0.25%

Test power level(2.5k)	20%	50%	75%	100%		
Recorded value in Amps	13.2mA	15.5 mA	18.7 mA	21.0mA		
as % of rated AC current	0.12%	0.14%	0.17%	0.19%		
Limit	0.25%	0.25%	0.25%	0.25%		
5.Power Quality – Power factor: This test shall be carried out in accordance with EN 50548 Annex D.3.4.1 but with nominal voltage -6% and +10%. Voltage to be maintained within $\pm 1.5\%$ of the stated level during the test.						
	216.2 V	230 V	253 V			
20% of Registered Capacity	0.97323	0.97836	0.97483			
50% of Registered Capacity	0.99162	0.99241	0.99191			
75% of Registered Capacity	0.99535	0.99652	0.99549			
100% of Registered Capacity	0.99652	0.99885	0.99688			
Limit	>0.95	>0.95	>0.95			
6.Protection – Frequency tests: These tests should be carried out in accordance with EN 50438 Annex D.2.4 and the notes in EREC G98 Annex A1 A.1.2.3 (Inverter connected) or Annex A2 A.2.2.3 (Synchronous)						
Function	Setting		Trip test		“No trip tests”	
	Frequency	Time delay	Frequency	Time delay	Frequency /time	Confirm no trip
U/F stage 1	47.5 Hz	20 s	47.50Hz	20.021s	47.7 Hz 30 s	No trip
U/F stage 2	47 Hz	0.5 s	47.00Hz	0.511s	47.2 Hz 19.5 s	No trip
					46.8 Hz 0.45 s	No trip
O/F stage 1	52 Hz	0.5 s	52.01Hz	0.508s	51.8 Hz 120.0 s	No trip

					52.2 Hz 0.45 s	No trip
Note. For frequency trip tests the frequency required to trip is the setting ± 0.1 Hz. In order to measure the time delay a larger deviation than the minimum required to operate the protection can be used. The “No trip tests” need to be carried out at the setting ± 0.2 Hz and for the relevant times as shown in the table above to ensure that the protection will not trip in error.						
7.Protection – Voltage tests: These tests should be carried out in accordance with EN 50438 Annex D.2.3 and the notes in EREC G98 Annex A1 A.1.2.2 (Inverter connected) or Annex A2 A.2.2.2 (Synchronous)						
Function	Setting		Trip test		“No trip tests”	
	Voltage	Time delay	Voltage	Time delay	Voltage /time	Confirm no trip
U/V	184 V	2.5 s	184.5V	2.516s	188 V 5.0 s	No trip
					180 V 2.45 s	No trip
O/V stage 1	262.2 V	1.0 s	262.6V	1.022s	258.2 V 5.0 s	No trip
O/V stage 2	273.7 V	0.5 s	274.2V	0.509s	269.7 V 0.95 s	No trip
					277.7 V 0.45 s	No trip
Note for Voltage tests the Voltage required to trip is the setting ± 3.45 V. The time delay can be measured at a larger deviation than the minimum required to operate the protection. The No trip tests need to be carried out at the setting ± 4 V and for the relevant times as shown in the table above to ensure that the protection will not trip in error.						
8.Protection – Loss of Mains test: For PV Inverters shall be tested in accordance with BS EN 62116. Other Inverters should be tested in accordance with EN 50438 Annex D.2.5 at 10%, 55% and 100% of rated power.						
To be carried out at three output power levels with a tolerance of plus or minus 5% in Test Power levels.						
Test Power	10%	55%	100%	10%	55%	100%
Balancing load on islanded network	95% of Registered Capacity	95% of Registered Capacity	95% of Registered Capacity	105% of Registered Capacity	105% of Registered Capacity	105% of Registered Capacity
Trip time. Limit is 0.5 s	0.283S	0.304S	0.395S	0.298S	0.315S	0.384S
For Multi phase Micro-generators confirm that the device shuts down correctly after the removal of a single fuse as well as operation of all phases.						
Test Power	10%	55%	100%	10%	55%	100%
Balancing load on islanded network	95% of Registered Capacity	95% of Registered Capacity	95% of Registered Capacity	105% of Registered Capacity	105% of Registered Capacity	105% of Registered Capacity

Trip time. Ph1 fuse removed	-	-	-	-	-	-
Test Power	10%	55%	100%	10%	55%	100%
Balancing load on islanded network	95% of Registered Capacity	95% of Registered Capacity	95% of Registered Capacity	105% of Registered Capacity	105% of Registered Capacity	105% of Registered Capacity
Trip time. Ph2 fuse removed	-	-	-	-	-	-
Test Power	10%	55%	100%	10%	55%	100%
Balancing load on islanded network	95% of Registered Capacity	95% of Registered Capacity	95% of Registered Capacity	105% of Registered Capacity	105% of Registered Capacity	105% of Registered Capacity
Trip time. Ph3 fuse removed	-	-	-	-	-	-
Note for technologies which have a substantial shut down time this can be added to the 0.5 s in establishing that the trip occurred in less than 0.5 s. Maximum shut down time could therefore be up to 1.0 s for these technologies.						
Indicate additional shut down time included in above results.				40 ms		
For Inverters tested to BS EN 62116 the following sub set of tests should be recorded in the following table.						
Test Power and imbalance	33% -5% Q Test 22	66% -5% Q Test 12	100% -5% P Test 5	33% +5% Q Test 31	66% +5% Q Test 21	100% +5% P Test 10
Trip time. Limit is 0.5 s	0.225s	0.296s	0.345s	0.227s	0.289s	0.332s
9.Protection – Frequency change, Vector Shift Stability test: This test should be carried out in accordance with EREC G98 Annex A1 A.1.2.6 (Inverter connected) or Annex A2 A.2.2.6 (Synchronous).						
	Start Frequency	Change	Confirm no trip			
Positive Vector Shift	49.0 Hz	+50 degrees	No trip			
Negative Vector Shift	50.0 Hz	- 50 degrees	No trip			
10.Protection – Frequency change, RoCoF Stability test: The requirement is specified in section 11.3, test procedure in Annex A.1.2.6 (Inverter connected) or Annex A2 A.2.2.6 (Synchronous).						
Ramp range	Test frequency ramp:	Test Duration	Confirm no trip			
49.0 Hz to 51.0 Hz	+0.95 Hzs ⁻¹	2.1 s	No trip			

51.0 Hz to 49.0 Hz	-0.95 Hzs ⁻¹	2.1 s	No trip	
11.Limited Frequency Sensitive Mode – Overfrequency test: This test should be carried out in accordance with EN 50438 Annex D.3.3 Power response to over- frequency. The test should be carried out using the specific threshold frequency of 50.4 Hz and Droop of 10%.				
Test sequence at Registered Capacity >80%	Measured Active Power Output	Frequency	Primary Power Source	Active Power Gradient
Step a) 50.00 Hz ±0.01 Hz	3610.57W	50.01Hz	3676.45W	-
Step b) 50.45 Hz ±0.05 Hz	3573.88W	50.45Hz		-
Step c) 50.70 Hz ±0.10 Hz	3395.67W	50.70Hz		-
Step d) 51.15 Hz ±0.05 Hz	3089.42W	51.16Hz		-
Step e) 50.70 Hz ±0.10 Hz	3392.84W	50.71Hz		-
Step f) 50.45 Hz ±0.05 Hz	3575.25W	50.44Hz		-
Step g) 50.00 Hz ±0.01 Hz	3611.29W	50.00Hz		
Test sequence at Registered Capacity 40% - 60%	Measured Active Power Output	Frequency	Primary Power Source	Active Power Gradient
Step a) 50.00 Hz ±0.01 Hz	1806.48W	50.01Hz	1845.26W	-
Step b) 50.45 Hz ±0.05 Hz	1767.77W	50.44Hz		-
Step c) 50.70 Hz ±0.10 Hz	1588.21W	50.71Hz		-
Step d) 51.15 Hz ±0.05 Hz	1268.08W	51.16Hz		-
Step e) 50.70 Hz ±0.10 Hz	1585.89W	50.68Hz		-
Step f) 50.45 Hz ±0.05 Hz	1768.05W	50.46Hz		-
Step g) 50.00 Hz ±0.01 Hz	1804.56W	50.00Hz		
Steps as defined in EN 50438				
12.Power output with falling frequency test: This test should be carried out in accordance with EN 50438 Annex D.3.2 active power feed-in at under-frequency.				
Test sequence	Measured Active Power Output	Frequency	Primary power source	
Test a) 50 Hz ± 0.01 Hz	3611.24W	50.01Hz	3686.54W	

Test b) Point between 49.5 Hz and 49.6 Hz	3603.87W	49.50Hz	3675.62W
Test c) Point between 47.5 Hz and 47.6 Hz	3595.94W	47.51Hz	3669.85W
NOTE: The operating point in Test (b) and (c) shall be maintained for at least 5 minutes			
13.Re-connection timer.			
Test should prove that the reconnection sequence starts after a minimum delay of 20 s for restoration of voltage and frequency to within the stage 1 settings of Table 2. Both the time delay setting and the measured delay should be provided in this form; both should be greater than 20 s to pass. Confirmation should be provided that the Micro-generating Plant does not reconnect at the voltage and frequency settings below; a statement of “no reconnection” can be made.			
Time delay setting	Measured delay	Checks on no reconnection when voltage or frequency is brought to just outside stage 1 limits of table 2.	
20	30S	At 266.2 V	At 180.0 V
		At 47.4 Hz	At 52.1 Hz
Confirmation that the Micro-generator does not re-connect.	Yes	Yes	Yes
14.Fault level contribution: These tests shall be carried out in accordance with EREC G98 Annex A1 A.1.3.5 (Inverter connected) and Annex A2 A.2.3.4 (Synchronous).			
For machines with electro-magnetic output		For Inverter output	
Parameter	Symbol	Value	Time after fault
Peak Short Circuit current	i_p	-	20 ms
Initial Value of aperiodic current	A	-	100 ms
Initial symmetrical short-circuit current*	I_k	-	250 ms
Decaying (aperiodic) component of short circuit current*	i_{DC}	-	500 ms
Reactance/Resistance Ratio of source*	X/R	-	Time to trip
			0.268
			In seconds
For rotating machines and linear piston machines the test should produce a 0 s – 2 s plot of the short circuit current as seen at the Micro-generator terminals.			
* Values for these parameters should be provided where the short circuit duration is sufficiently long to			

enable interpolation of the plot	
15.Logic Interface.	Yes
<p>This equipment is equipped with RJ45 terminal for logic interface that being received the signal from the DNO, the connection should be installed per installation manual, and the signal should be a simple binary output that captured by RJ45 terminal(PIN 5 and 1 for detecting the signal). Once the signal activated, the inverter will reduce its active power to zero within 5s.</p>	
16.Self-Monitoring solid state switching: No specified test requirements. Refer to EREC G98 Annex A1 A.1.3.6 (Inverter connected).	Yes or NA
It has been verified that in the event of the solid state switching device failing to disconnect the Micro-generator , the voltage on the output side of the switching device is reduced to a value below 50 V within 0.5 s.	NA
17. Cyber security	Yes or NA
Confirm that the Manufacturer or Installer of the Micro-generator has provided a statement describing how the Micro-generator has been designed to comply with cyber security requirements, as detailed in 9.7.	Yes
Additional comments	