

Installation and Configuration of the GivEnergy USB Communications Device (Dongle)



Published 2nd July 2019

Contents

1.1 - The Communications Device.....	2
1.2 - Configuring the WiFi Module.....	2
1.2.1 - Powering the WiFi Module.....	2
1.2.2 - Connecting to the WiFi Module using your Computer.....	3
1.2.3 - Connecting the WiFi Module to the Internet.....	4
1.2.4 - Changing the security settings on the WiFi Module.....	5
1.2.5 - Checking the WiFi Dongle is connected to the internet.....	6
1.3 - Configuring the 3G module.....	7
1.3.1 - Inserting the SIM card.....	7
1.4 Ensuring the Module is operating correctly.....	8

1.1 - The Communications Device



USB Dongles come in 2 varieties - WiFi or 4G. WiFi modules typically have a serial number that starts with 'W', and 4G typically start with 'G'.

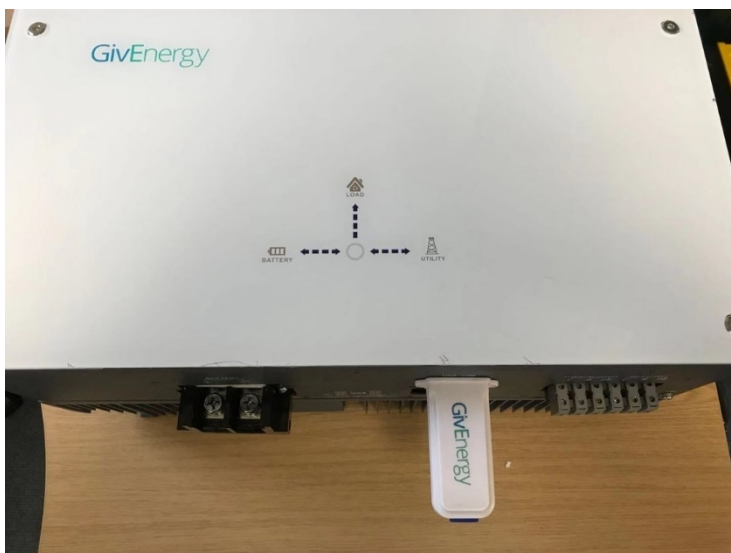
You can also tell the difference by removing the blue rubber cap at the base of the device and taking a look inside. WiFi modules have a small reset button, whereas 3G modules have a SIM card slot.



1.2 - Configuring the WiFi Module

1.2.1 - Powering the WiFi Module

Insert the WiFi module into the USB port on the underside of the GivEnergy Hybrid Inverter. The inverter must be powered in order for the setup to take place. If you don't currently have access to an inverter that is switched on, you may plug it in to a computer like you would any other USB device. Once the dongle receives power, it will start to flash slowly.



1.2.2 - Connecting to the WiFi Module using your Computer

If the module is flashing, this means that it's ready to be configured. Open up your list of wireless networks, and find the network with the same name as the serial number of the dongle.

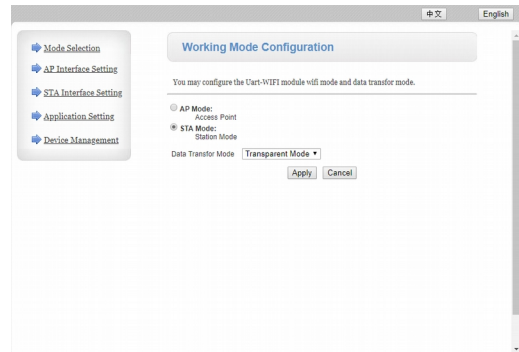
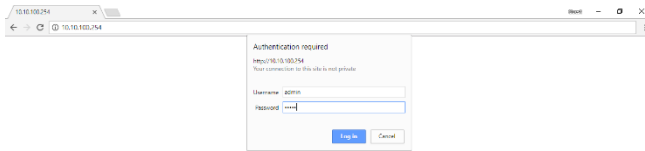


Click connect. Once connected you won't have an internet connection anymore, so this is a good way to test if you have connected properly.



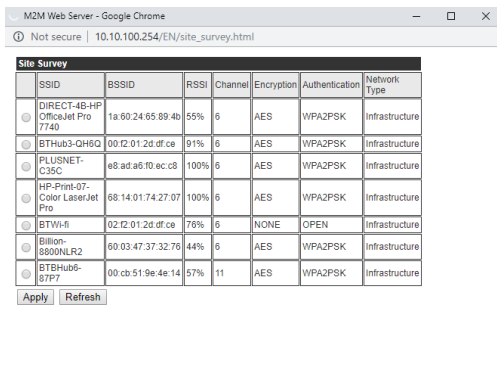
1.2.3 - Connecting the WiFi Module to the Internet

Open up a web browser (we recommend Google Chrome) and type in 10.10.100.254. You should be prompted to enter credentials to access this page. By default, the username and password are both 'admin'. This can be reconfigured later for security, if you or the end user wishes for this to be changed.

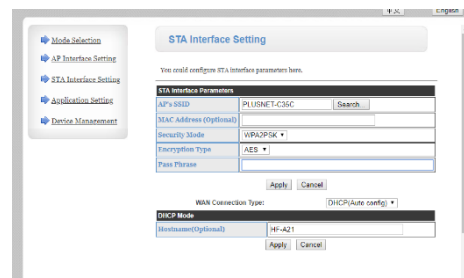


If the page loads in another language, click 'English' in the top-left corner to change it.

Click 'STA Interface Setting' on the left to configure the dongle, and the following page will load. Click 'Search' next to AP's SSID at the top of the page and look for the wireless network you wish for the dongle to connect to. If you can't find the network you're looking for, press refresh.

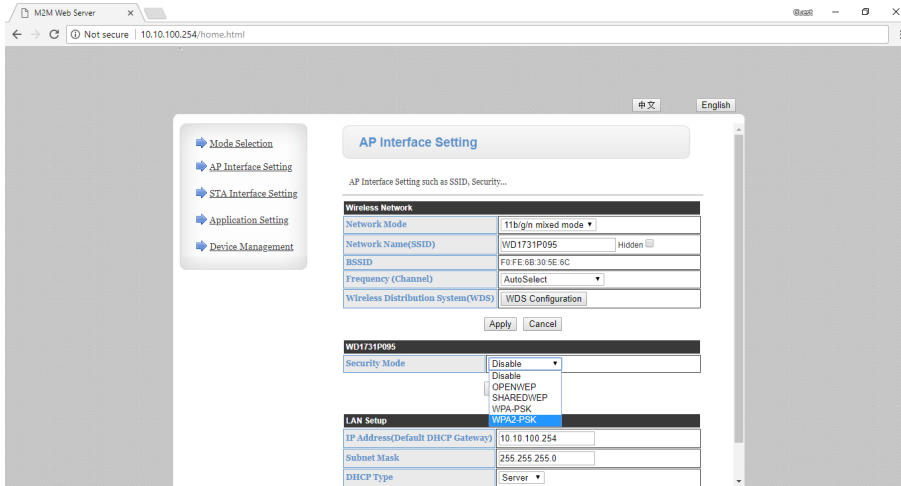


If selected correctly, the SSID will populate the AP's SSID field. Ensure the correct security mode is selected (typically WPA2PSK) and enter the password in the 'Pass Phrase' field. Click 'Apply' to confirm these settings.



1.2.4 - Changing the security settings on the WiFi Module

Select 'AP Interface Setting' on the left of the page. This brings up the page to configure the security settings for the dongle itself.

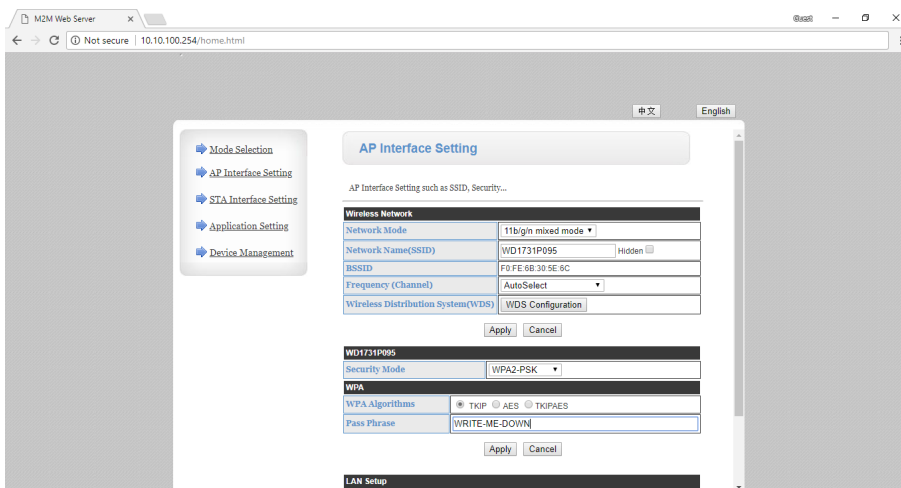


Change the 'Security Mode' to WPA2-PSK.

Once the box appears, please enter the passcode that will be used to connect to the Dongle in the future.

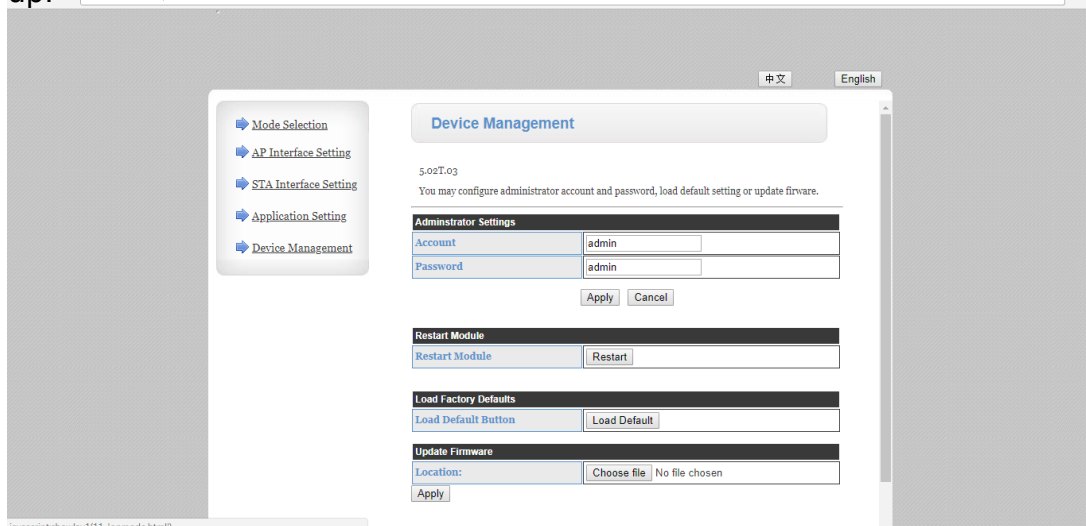
By default, this is set to **12345678**

You may set this to whatever the customer wishes, but **please make sure that this password is written down** somewhere as it will be necessary to connect to the Dongle again.



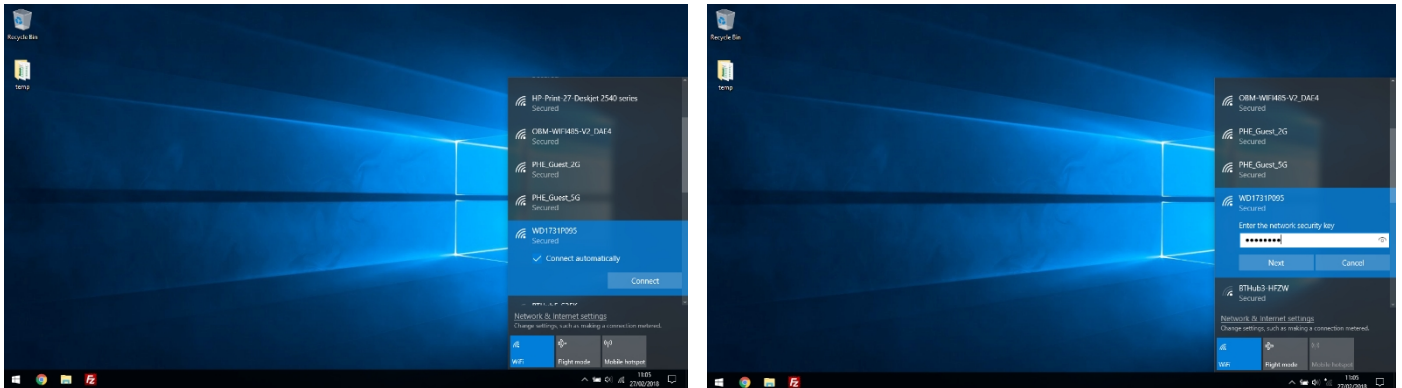
Once you have entered

If you wish to change the login username and password for the Dongle, select 'Device Management' on the left-hand side. Here you may change 'Account' and 'Password' for increased security. As with the above, **please make sure you write this down** if you change it. Click 'Apply' to confirm these changes. Press the 'Restart' button to restart the dongle, and wait a few seconds for it to start back up.



1.2.5 - Checking the WiFi Dongle is connected to the internet

If all of the previous settings were configured correctly, your computer should no longer be connected to the dongle. Connect to the Dongle using the same steps listed in **.2.2**. This time, you'll need to enter the password for the dongle, as set on 'AP Settings Interface' in **.2.4**. The device should now display as 'secured' among the list of nearby WiFi networks.



Once connected, you should be able to connect to the internet as you normally would on another WiFi network. Confirm that the dongle has been currently configured by loading a web page in a web browser.

1.3 - Configuring the 3G module

1.3.1 - Inserting the SIM card

If your device was not supplied with a SIM card pre-installed. Please insert the SIM card into the bottom of the Dongle, as shown below. The gold chip on the underside of the SIM must be facing up, along with the side of the Dongle that displays the serial number, as below.



Insert the SIM card into the Dongle so that the angled corner is facing away from the Dongle and press it in all the way. You may need a tool small enough to press the SIM card firmly into the slot. Once it is in correctly, you will hear a small click and feel the SIM card slot into place.

Once the SIM has been inserted, reattach the blue rubber cap and insert the Dongle into the USB port in the inverter.

1.4 Ensuring the Module is operating correctly

Insert the module into the USB slot on the underside of the inverter and ensure that the inverter is switched on, if this hasn't been done already. If the module has a solid or flashing blue light, this means that it is receiving power.

If the module is flashing slowly, it has not yet established a connection with the inverter. After a few minutes, the light should begin flashing rapidly or change to a solid blue.

If the light is flashing rapidly, it has not yet connected to the network. If it is a 4G Module, please ensure that the SIM card is inserted correctly. If after 3 minutes the dongle is still flashing rapidly, please contact technical support.

If it is a WiFi Module, please ensure that the dongle has an internet connection by connecting to the dongle using your computer and attempting to load a web page. If after 3 minutes the dongle is still flashing rapidly, please contact technical support.

Contact Technical Support on **01337 252874** or email **installation@GivEnergy.co.uk**