

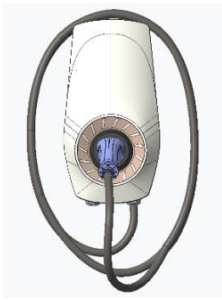


# Quick Installation

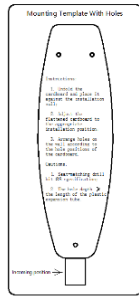
HC-EV-AC-07K/11K/22K

Smart Energy,  
Sustainable Solutions.

## 1. Unpack and inspect components



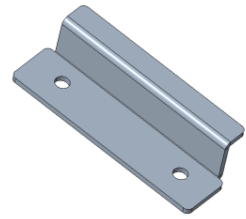
EV Charger\*1



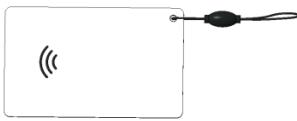
Positioning Cardboard\*1



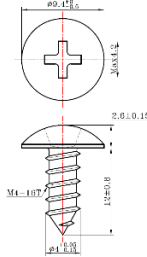
User Manual\*1



Wall-Mount Bracket\*1



RFID Card\*2



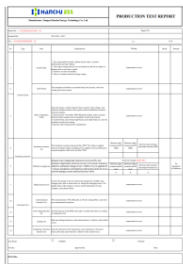
Phillips Pan Head Screw\*2



Expansion Bolt\*4



Pole(Optional)\*1



Production test report



Qualified Certificate



Quality Assurance Card

## 2. Wall-Mount Installation

### Installation tools:

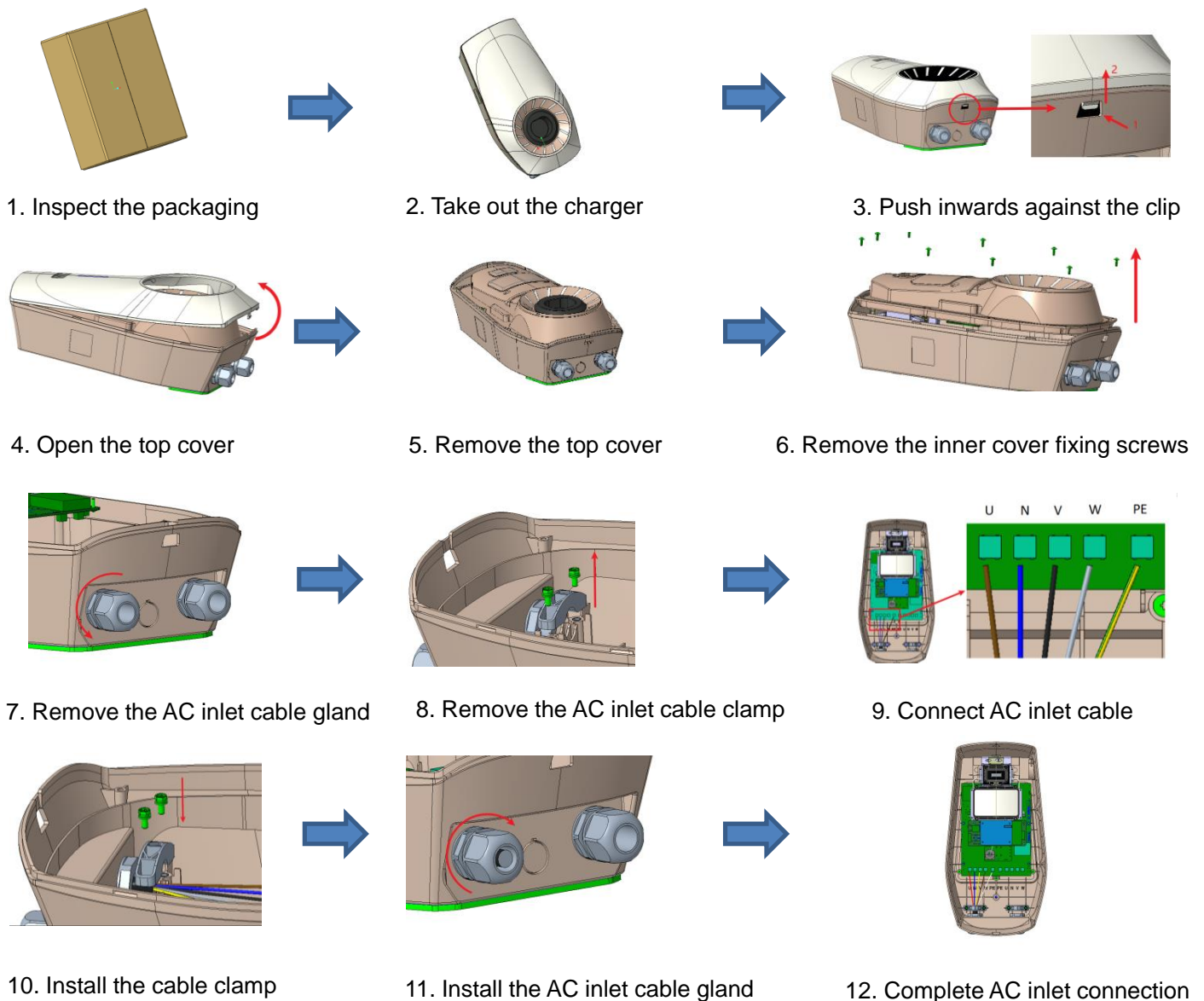
Impact drills,  $\phi 10$  impact drills, Phillips screwdrivers, marking pens, wire strippers, diagonal pliers, goggles, protective gloves.

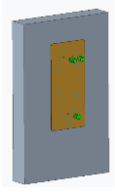
### Installation steps:

1. Inspect the packaging for any damage. Proceed to the next steps if it is confirmed to be intact.
2. Place the charger on a flat area and cushion the back with foam.
3. Push inwards against the clip in the direction shown by the arrow and then push upwards to open the top cover clip.
4. Lift the top cover from the open slit in the direction of the arrow with force.
5. Remove the top cover and place it in a safe location to avoid damage.
6. Use a Phillips screwdriver to remove the 9 Phillips pan head screws on the inner cover of the charger and open the inner cover.
7. Loosen the cable gland of the AC inlet cable.
8. Use a Phillips screwdriver to loosen the AC inlet cable clamp.
9. Thread the AC wire from the inlet into the charger, and use a screwdriver to fix the corresponding phase and earth wires.

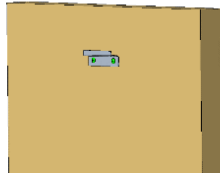
10. Use a Phillips screwdriver to lock the inlet clamp tightly.
11. Tighten the cable gland to fix the cable.
12. Check if the AC power cable is securely connected to complete the wiring.
13. Reasonably plan the installation area, use positioning cardboard to confirm position on the selected concrete wall and mark with a marker pen. Use impact drills and  $\phi 10$  drills to make holes at the marked position with a depth of  $\geq 80$ mm.
14. Install the expansion bolts inside the holes, and the expansion bolt jaws shall not fall into the holes. Use the expansion bolts to fix the bracket in the two expansion bolt holes at the top, tighten it with a Phillips screwdriver.
15. Pick up the charger and hang it on the bracket, and make the back of the charger snap fasten with the bracket.
16. Use a Phillips screwdriver to thread the lower expansion bolt from the inside of the charger, and fix and lock it with the reserved expansion bolt hole.
17. Install the inner cover and use a Phillips screwdriver to tighten the 9 Phillips pan head screws.
18. Place the top cover in the corresponding position on the charger.
19. Press down firmly on the latches of the top cover to secure it.
20. Shake the charger from side to side to check if the installation is secure to complete the installation.

Installation Diagram:

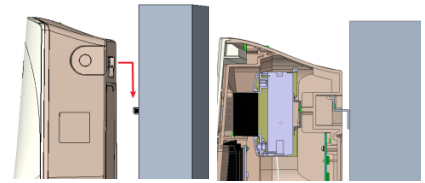




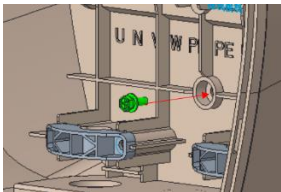
13. Install screws on the positioned hole



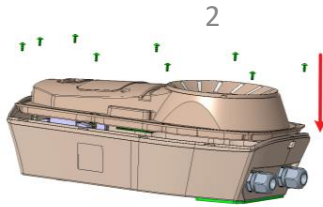
14. Install the bracket



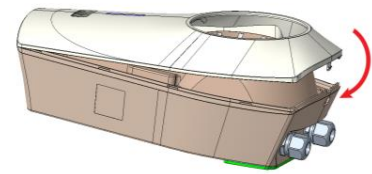
15. Hang the charger to the bracket



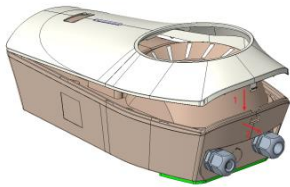
16. Fix the lower expansion bolts



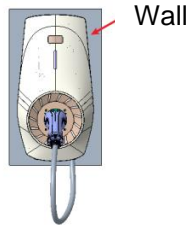
17. Fix the inner cover



18. Place the top cover



19. Press down the top cover



20. Installation completed

### 3. Pole-Mount Installation(Optional)

#### Installation tools:

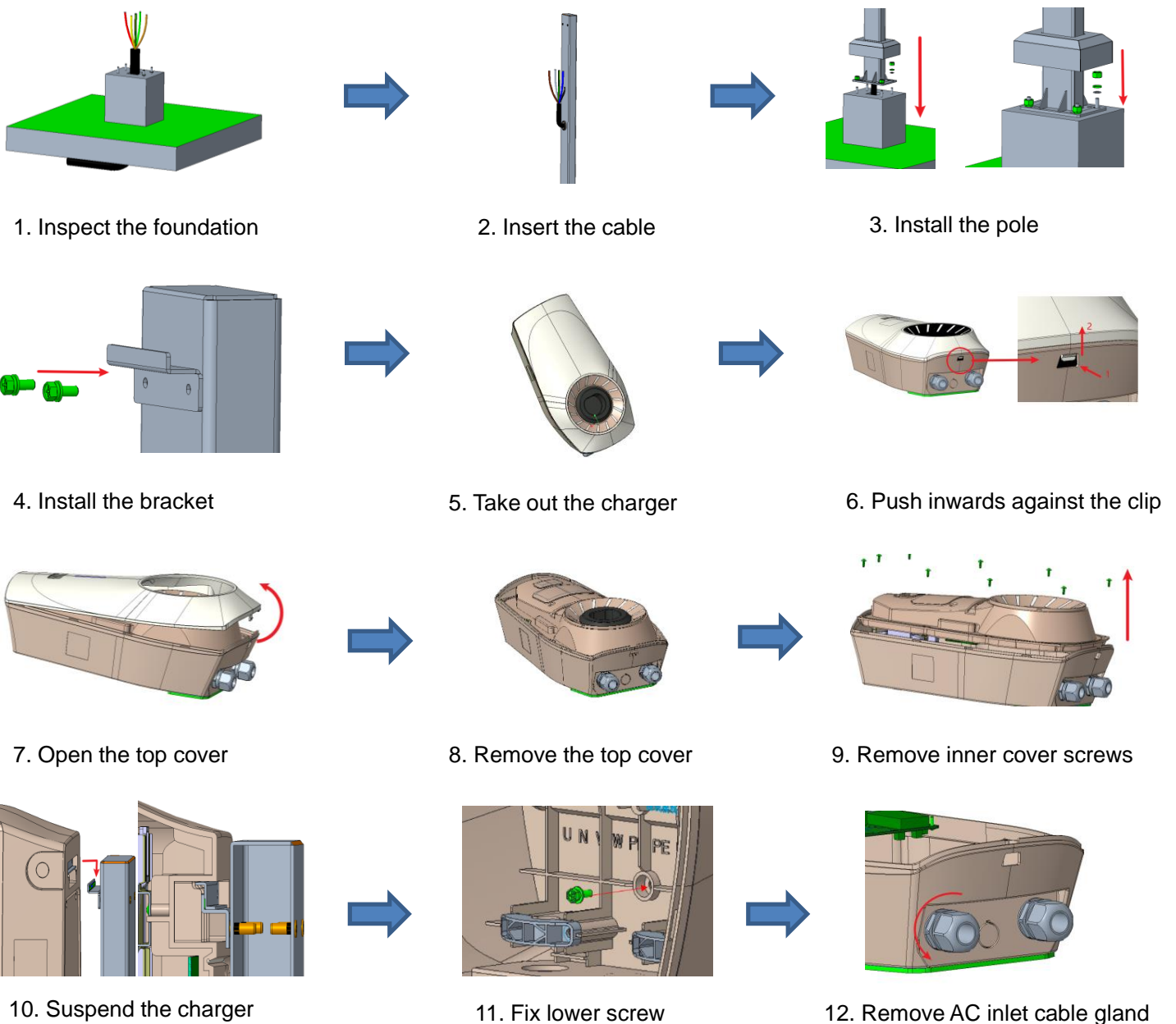
Phillips screwdriver, wire stripper, diagonal pliers, protective gloves, M8 socket spanner.

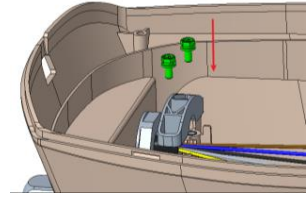
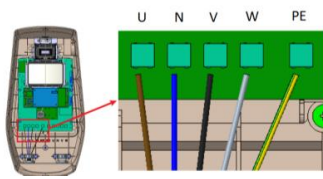
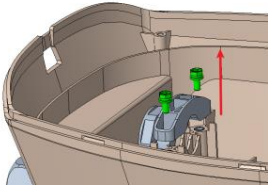
#### Installation steps:

1. Inspect if the foundation for the pole-mount installation is made according to the construction drawings.
2. Open the pole package, take out the pole, move the bottom box cover of the pole upwards, and leak out the installation holes at the bottom of the pole. Pass the pre-buried cable from the bottom upwards inside the pole, and wear it out from the middle wire protection ring position.
3. Put the pole on the pre-embedded bolt of foundation from top to bottom, pre-tighten the nut, and tighten it with a spanner. Move the pole box cover downwards and place it on the ground to cover the internal fixing bolts.
4. Use a Phillips screwdriver to fix the bracket into the two nut holes at the top of the pole and tighten with a Phillips screwdriver.
5. Place the charger on a flat area and cushion the back with foam.
6. Push inwards against the clip in the direction shown by the arrow and then push upwards to open the top cover clip.
7. Lift the top cover from the open slit in the direction of the arrow with force to complete the removal of the top cover of the charger.
8. Remove the top cover and place it in a safe location to avoid damage.
9. Use a Phillips screwdriver to remove the 9 Phillips pan head screws on the inner cover of the charger and open the inner cover.
10. Pick up the charger and hang it on the bracket, so that the clips on the back of the charger and the bracket are tightly clamped.

11. Use a Phillips screwdriver to tighten the middle and lower fixing screws of the charger, so that the charger is firmly fixed with the pole.
12. Loosen the cable gland of the AC inlet cable.
13. Use a Phillips screwdriver to loosen the AC inlet cable clamp.
14. Thread the AC wire from the inlet into the charger, and use a screwdriver to fix the corresponding phase wire and grounding wire.
15. Use a Phillips screwdriver to lock the inlet clamp tightly,
16. Tighten the cable gland to fix the AC inlet cable.
17. Install the inner cover and use a Phillips screwdriver to tighten the 9 Phillips pan head screws.
18. Place the top cover in the corresponding position on the charger.
19. Press down firmly on the latches of the top cover to secure it.
20. Shake the charger from side to side to check if the installation is secure to complete the installation.

Installation Diagram:

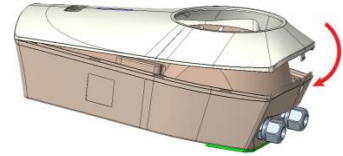
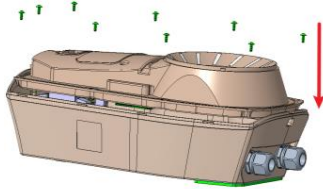
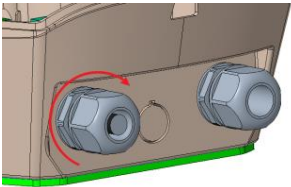




13. Remove the AC inlet cable clamp

14. Connect AC inlet cable

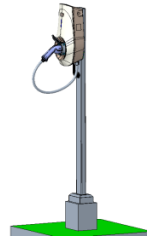
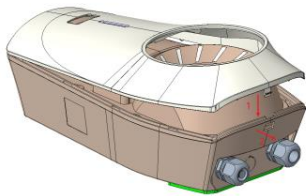
15. Install the cable clamp



16. Fix the cable gland

17. Fix the inner cover with screws

18. Place the top cover



19. Press down the top cover

20. Installation check